



Project no. 018340

Project acronym: EDIT

Project title: Toward the European Distributed Institute of Taxonomy

Instrument: Network of Excellence

Thematic Priority: Sub-Priority 1.1.6.3: "Global Change and Ecosystems"

C5.077 CDM data interface components available (software)

Due date of component: Month 36
Actual submission date: Month 36

Start date of project: 01/03/2006

Duration: 5 years

Organisation name of lead contractor for this component: 9 FUB-BGBM

Revision: final

Project co-funded by the European Commission within the Sixth Framework Programme (2002-2006)		
Dissemination Level		
PU	Public	X
PP	Restricted to other programme participants (including the Commission Services)	
RE	Restricted to a group specified by the consortium (including the Commission Services)	
CO	Confidential, only for members of the consortium (including the Commission Services)	

C5.077 CDM data interface components available (software)

The Common Data Model (CDM) acts as the central “information broker” within EDIT’s platform for cybertaxonomy architecture. Apart from its role as an advanced storage facility for individual researcher and taxonomic communities it has to communicate with decoupled EDIT platform components such as data portals, (print) publication tools, fieldwork and mapping software, as well as collection databases and specimen information systems (see figure). Consequently, the implementation of CDM interfaces providing and accepting data according to established international biodiversity informatics data standards and quasi-standards is considered essential for the entire EDIT-based taxonomic information workflow.

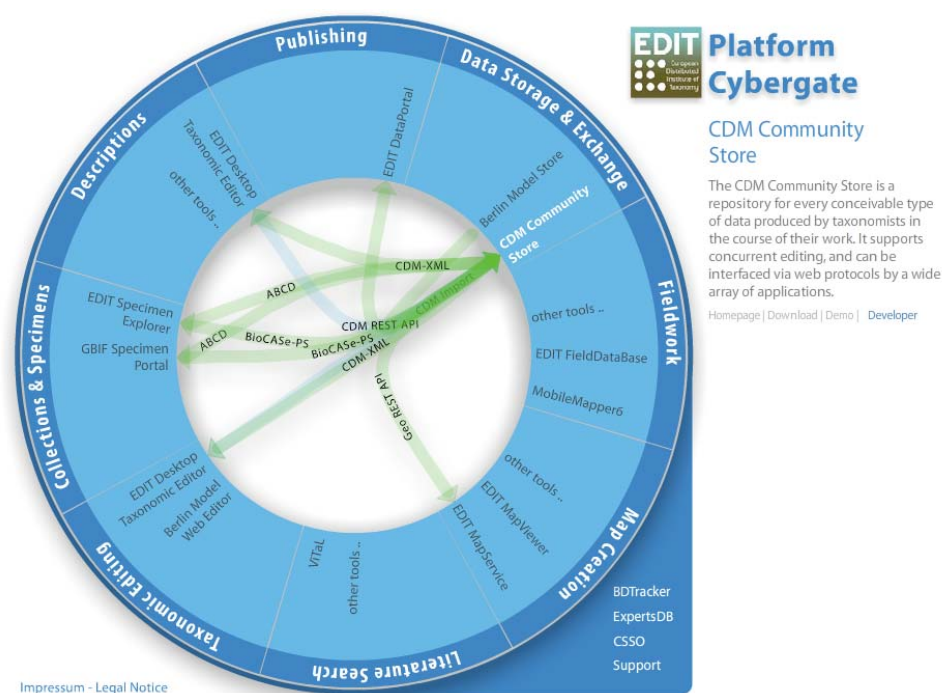


Fig.: Snapshot of the EDIT Platform Cybergate showing the high connectivity of CDM community stores to other platform components. The Cybergate shows already existing interfaces only. More links (e.g. from CDM to ViTAL) are under development.

To date, the following data interface modules have been implemented:

To CDM

- TaxonX (subset, <http://www.taxonx.org/schema/v1/taxonx1.xsd>)
- ABCD 2.06 (Access to Biological Collection Data, <http://www.tdwg.org/activities/abcd/>)
- TCS (Taxonomic Concept Schema, <http://www.tdwg.org/activities/tnc/>)
- SDD (Structure of Descriptive Data, <http://wiki.tdwg.org/twiki/bin/view/SDD/WebHome>)
- Berlin Model (Berlin Taxonomic Information Model, <http://www.bgbm.org/biodivinf/Docs/bgbm-model/>)
- CDM/XML (<http://dev.e-taxonomy.eu/trac/wiki/CdmAPI-RemoteAPI>)
- EDIT Spreadsheet-Formats for dedicated information (e.g. reference lists)

From CDM

- SDD (Structure of Descriptive Data, <http://wiki.tdwg.org/twiki/bin/view/SDD/WebHome>)
- Berlin Model (Berlin Taxonomic Information Model, <http://www.bgbm.org/biodivinf/Docs/bgbm-model/>)
- CDM/XML (<http://dev.e-taxonomy.eu/trac/wiki/CdmAPI-RemoteAPI>)
- TCS (Taxonomic Concept Schema, <http://www.tdwg.org/activities/tnc/>, interface infrastructure existing, fully functional interface not yet completed)

The present state of the CDM data interface components allow for seamless integration of numerous taxonomic software products into the EDIT Platform for Cybertaxonomy. Further extensions of import and export functionalities are expected in the course of the implementation of the EDIT CDM “Power user interface” to be available as a design study by month 40 and as a fully functional platform component by month 52.